

Parish Social Ministry

ANNUAL REPORT 2008

Companions on the Journey

Challenging Times

- Economic crisis
- Unemployment
- Foreclosures
- Rising fuel and food costs

Resilient Communities, responding with extraordinary generosity, served 17,089 clients each month in Nassau and Suffolk counties.

Shared Hardships

By our estimates, an unduplicated 93,582 people were assisted by PSM programs on Long Island in 2007-2008.

Published by Catholic Charities
Diocese of Rockville Centre





Companions in Spirit

Parish Social Ministry (PSM) coordinators, volunteers, pastors and all who share their gifts and resources in the support of PSM/Outreach programs are *companions on the journey* with people in need. This past year saw greater need and fewer resources on Long Island, however, like the miracle of the multiplication of loaves and fishes, parishes found ways of doing more with less. All who minister in PSM/Outreach programs reflect the Gospel in action through their faithful dedication to walking with individuals and families struggling in these difficult economic times and in advocating for justice and policies that respect the life, dignity and rights of all people.

Our 2008 PSM Report

For the timeframe of September 1, 2007, through August 31, 2008:

- Of 134 parishes, 115 have a Parish Social Ministry program.
- Of 115 PSM/Outreach programs, 63 programs (55%) collected and reported data to Catholic Charities.
- 17,089 clients were served on average monthly.
- 34,233 services were provided on average monthly.

Challenging Times - The past year forced us to live through the highest gasoline prices our country has seen in 30 years, and PSM/Outreach programs have seen an increase in need which reflects the economic downturn. They are also seeing a new population seeking assistance – many of the very people who previously donated to their parish pantry are now in need of food for themselves and their families.

Shared Hardships - PSM/Outreach coordinators and volunteers have been meeting the needs of their neighbors in collaboration with other ministries in their parishes. This re-

sponse relies on invaluable partnerships with St. Vincent de Paul Society conferences, youth groups, religious education programs, schools (parochial and public) and of course the many generous people who contribute to these efforts.

Resilient Communities - Throughout these difficult times, we are blessed to witness such faith in action. The impact of this hard economy has hurt many, but has also brought forth the incredible generosity of God's people, who faithfully share their time, talent and treasure.

Data Sources

The 2008 PSM Report is based on information from 92 of the 115 PSM/Outreach programs (80%) in the Diocese. These programs provided PSM Monthly Reports and/or responded to a PSM survey. In the majority of cases, programs provided both.

Statistical information is from the PSM monthly reports reflecting the numbers of clients and direct services provided. These reports are submitted by 63 PSM/Outreach programs based on their daily logs, which are then summarized onto monthly reports and submitted to Catholic Charities, where a database for all reporting PSM/Outreach programs is maintained. Reporting parishes are listed on the far right panel.

Survey information is from the annual PSM survey completed and submitted by 89 PSM/Outreach programs identifying the multitude of services of the PSM/Outreach programs, which include direct services and beyond. Responding parishes are listed on the back cover.

Acknowledgements

We want to thank Parish Social Ministry coordinators, staff and volunteers whose dedication to the ministry help us to compile their data and report it to you. We appreciate the Catholic Charities staff who contributed in so many ways, particularly Silvia Avalos, who manages the data, and Martha Graziano, Jan Jamroz and Mary Robinson, who produced this report.

Companions Through Shared Hardships, Shared Successes

Shared Hardships

The 2008 report shows an increase in the number of **clients served** to an average of **17,089 monthly**. Deaneries with high densities of low-income households saw more need than those with more middle- and higher-income earners. We see in these latest numbers how poverty remains concentrated in particular communities amid Long Island's relative affluence. The **number of services** provided by PSM/Outreach programs rose to an average of **34,223 a month**.

The **estimated unduplicated number of clients served by all 115 PSM/Outreach Programs rose to more than 93,000** this reporting year.

Summary of Reported Clients and Services: Monthly by Deanery and County Sept. 1, 2007—Aug. 31, 2008

	Deanery Number and Name	Number of Parishes Represented	Average Monthly Number of Clients Served	Average Monthly Number of Services Provided
Nassau County	01 - Rockville Centre	4	2,098	4,190
	02 - North Hempstead	4	714	1,368
	03 - Oyster Bay	3	477	908
	04 - Belmont	4	672	1,242
	05 - Hicksville	6	1,584	3,483
	06 - Five Towns	2	532	2,467
	07 - Seaford	5	1,005	2,432
	Nassau Total	28	7,082	16,090
Suffolk County	08 - Huntington	4	1,117	2,037
	09 - Babylon	7	2,755	3,518
	10 - Islip	6	1,924	3,720
	11 - North Brookhaven	4	969	2,350
	12 - South Brookhaven	7	1,994	3,402
	13 - Peconic	3	517	1,125
	14 - Smithhaven	4	731	1,991
	Suffolk Total	35	10,007	18,143
	Grand Total	63	17,089	34,233

Shared Successes

No one program, no one agency, no one person can provide all of the services and supports needed, but together we accomplish incredible things. Collaborations with many parish ministries as well as other congregations, community and governmental programs that assist with providing food, clothing, advocacy, transportation, volunteers and finances help make a very big job manageable.

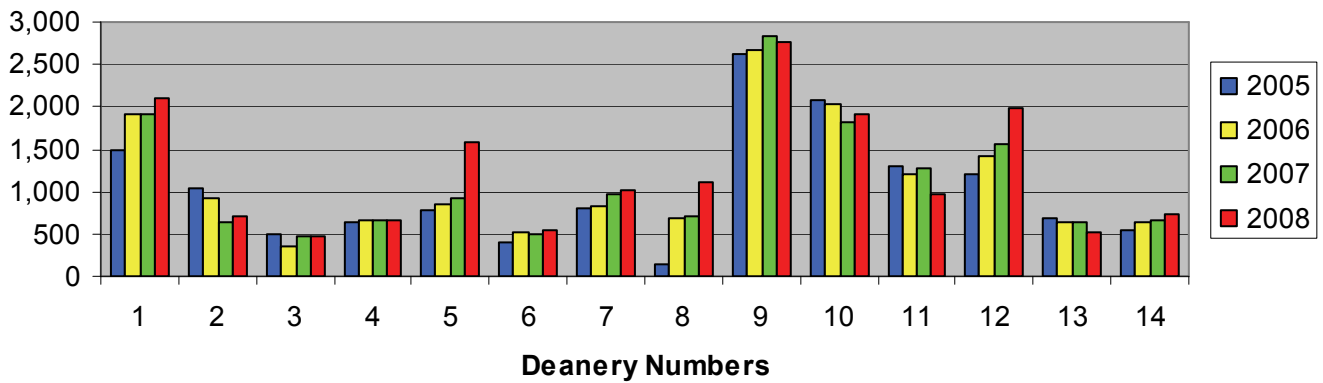
COMPANIONS AND COLLABORATIONS THAT MAKE A DIFFERENCE

A man went to the Parish Social Ministry program at his parish. He described the downward spiral he, his wife and two children had experienced. Following months of illness, his wife was unable to work and was now on disability. They had gone through their savings and were facing foreclosure on their home because, with their reduced income, they could no longer afford their mortgage payment. The family had been working with a non-profit housing agency to obtain a loan modification to lower their monthly mortgage payment, however this was not possible because their payments were not current. This man had lost hope, having tried everything else he could imagine. He was angry and desperate and had lost faith. The PSM coordinator and volunteers put their heads and their prayers together to come up with a plan to help this family. They contacted the parish St. Vincent de Paul Conference and Catholic Charities to enlist their help. Through their collaboration, the people of Parish Social Ministry, St. Vincent de Paul, Catholic Charities and the housing agency became companions who walked with this family to secure a mortgage loan modification that was manageable for them. Not only was a house saved, but a man's dignity was restored and his faith renewed.



Then Jesus took the loaves, gave thanks, and gave them out to all who were sitting there; he did the same with the fish, giving out as much as they could eat. When the people had eaten their fill, Jesus said to the disciples, "Gather up the leftover pieces so that nothing gets wasted." [They] filled 12 baskets.
John 6:11-13

Average Number of Clients Served Monthly, by Reporting Parishes



NASSAU

Deanery 1:

St. Martha, Uniondale
 Our Holy Redeemer, Freeport
 Queen of the Most Holy Rosary, Roosevelt
 St. Agnes, Rockville Centre

Deanery 2:

Notre Dame, New Hyde Park
 St. Aloysius, Great Neck
 St. Mary, Manhasset
 St. Peter of Alcantara, Port Washington

Deanery 3:

St. Dominic, Oyster Bay
 St. Edward the Confessor, Syosset
 St. Patrick, Glen Cove

Deanery 4:

Our Lady of Peace, Lynbrook
 St. Boniface, Elmont
 St. Catherine of Siena, Franklin Square
 St. Vincent de Paul, Elmont

Deanery 5:

Holy Family, Hicksville
 St. Bernard, Levittown
 St. Brigid, Westbury
 St. Ignatius Loyola, Hicksville
 St. James, Seaford
 St. Raphael, East Meadow

Deanery 6:

St. Ignatius Martyr, Long Beach
 St. Raymond, East Rockaway

Deanery 7:

Cure of Ars, Merrick
 Maria Regina, Seaford
 Sacred Heart, North Merrick
 St. Frances de Chantal, Wantagh
 St. William the Abbot, Seaford

SUFFOLK

Deanery 8:

St. Anthony of Padua, East Northport
 St. Hugh of Lincoln, Huntington Station

St. Elizabeth, Melville

St. Philip Neri, Northport

Deanery 9:

Our Lady of Grace, West Babylon
 Our Lady of Lourdes, West Islip
 Our Lady of the Assumption, Copiague
 Our Lady of the Miraculous Medal, Wyandanch

Ss. Cyril and Methodius, Deer Park

St. Joseph, Babylon
 St. Martin of Tours, Amityville

Deanery 10:

St. John Nepomucene, Bohemia
 St. John of God, Central Islip
 St. Lawrence the Martyr, Sayville
 St. Mary, East Islip

St. Patrick, Bay Shore

St. Peter the Apostle, Islip Terrace

Deanery 11:

Infant Jesus, Port Jefferson
 St. Anthony of Padua, Rocky Point

St. Gerard Majella, Port Jefferson Station

St. Mark, Shoreham

Deanery 12:

Good Shepherd, Holbrook
 Our Lady of Mount Carmel, Patchogue
 Our Lady of the Snow, Blue Point

St. Francis de Sales, Patchogue

St. John the Evangelist, Center Moriches

St. Joseph the Worker, East Patchogue

St. Sylvester, Medford

Deanery 13:

Most Holy Trinity, East Hampton

St. Isidore, Riverhead

St. John the Evangelist, Riverhead

Deanery 14:

Holy Cross, Nesconset

St. James, Setauket

St. Joseph, Ronkonkoma

St. Thomas More, Hauppauge

The 63 parishes that submitted PSM monthly statistics for this report are listed above.

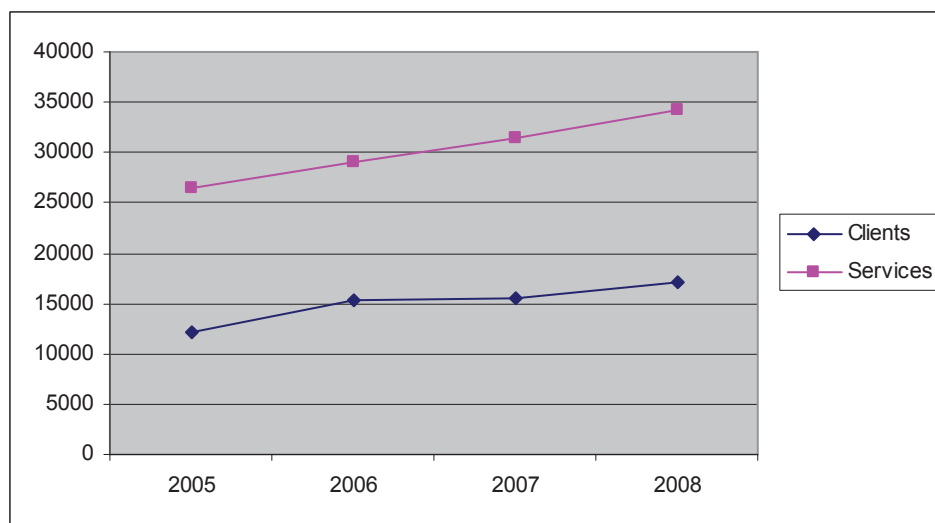
Companions in Challenging Times

The impact of the economic downturn has been evident in the increase of assistance requested of our PSM/Outreach programs. The ability of individuals and families to sustain themselves has been dramatically affected by the increased unemployment rate, predicted to continue rising. The U.S. Department of Agriculture reported that the number of food stamps recipients went up 16% on Long Island in a one-year period, for a total of 78,879 in both counties. Newsday, Nov 08

These figures are consistent with the increased food pantry requests across Long Island, as families and individuals struggle to put food on the table. This greatly impacts PSM/Outreach programs, as many people turn to their parish to supplement their food needs.

Following food, the most requested services provided by PSM/Outreach programs are economic assistance, basic needs for living (clothing, furniture) and transportation. Public benefits referrals and advocacy are elements of the case management provided by a majority of PSM/Outreach programs.

Illustrated on the graph below, the numbers of clients and services provided for each of the four years of the PSM Report have increased by more than 25%.



Gratitude: A Client Thank-You Note

"I would like to thank the Outreach for help that you have given me and my family. The assistance has given us an ease due to the injury that I have sustained at work. This has been and still is an uphill battle concerning my injury. A job today is a very sacred thing... but also, due to my faith in God and then there was an outreach that opened their door to me and my family to receive assistance, we are ever so grateful. Also the person that assisted me was the most gracious to us. So my family and I would like to say thank you for being there when we were in need. I know that God will continue to make you His arms and hands as there will be more people in need."

"Parishes are called out to the hurting, the poor, and the vulnerable in our midst in concrete acts of charity. Just as the gospel tells us our lives will be judged by our response to the 'least of these,' so too our parishes should be measured by our help for the hungry, the homeless, the troubled, and the alienated - in our own community and beyond."

Communities of Salt and Light: Reflections on the Social Mission of the Parish
National Conference of Catholic Bishops, 1994.



Survey Responses from Nassau

St. Christopher, Baldwin
 St. Gertrude, Bayville
 St. Barnabas, Bellmore
 St. Raphael, East Meadow
 St. Raymond, East Rockaway
 St. Boniface, Elmont
 St. Vincent de Paul, Elmont
 St. Catherine of Sienna, Franklin Square
 Our Holy Redeemer, Freeport
 St. Anne, Garden City
 St. Patrick, Glen Cove
 St. Aloysius, Great Neck
 Holy Family, Hicksville
 St. Ignatius Loyola, Hicksville
 Our Lady of Mercy, Hicksville
 Our Lady of Good Counsel, Inwood
 St. Bernard, Levittown
 St. Ignatius Martyr, Long Beach
 St. Mary of the Isle, Long Beach
 Our Lady of Peace, Lynbrook
 Our Lady of Lourdes, Malverne
 St. Mary, Manhasset
 St. Rose of Lima, Massapequa
 Curé of Ars, Merrick
 Holy Spirit, New Hyde Park
 Notre Dame, New Hyde Park
 Sacred Heart, North Merrick
 St. Dominic, Oyster Bay
 St. Peter of Alcantara, Pt. Washington
 Queen of the Most Holy Rosary, Roosevelt
 St. Mary, Roslyn
 Maria Regina, Seaford
 St. James, Seaford
 St. William the Abbot, Seaford
 St. Edward the Confessor, Syosset
 St. Martha, Uniondale
 Holy Name of Mary, Valley Stream
 St. Frances de Chantal, Wantagh
 St. Brigid, Westbury
 St. Thomas the Apostle, West Hempstead
 St. Aidan, Williston Park
 Holy Name of Jesus, Woodbury

2008 PARISH SOCIAL MINISTRY SURVEY

Eighty-nine parishes (listed here by county) responded to the PSM Survey in 2008. The efforts of each PSM program are varied and unique responses to the needs and character of the local community. The survey told us of the many activities going on in parishes, responding to the needs of the elderly, the homebound, the bereaved. Their ministries often extend beyond the boundaries of the parish to other communities and the public square.

Below is a list of services provided by many parishes, but not captured in the PSM Monthly Reports. The numbers represent the parishes providing these services.

Specialized Outreach Services

Parish advocate for the disabled (23), handyman services (18), English as a Second Language classes (12), speakers/workshops (36), professional services (22)

Visits

Nursing homes (34), hospitals (32), homebound (52), meal share (11), telephone reassurance calls (45)

Groups

Bereavement (42), caregiver support (5), cancer support (4), Rainbows support (8), Consolation Ministry (29), seniors (25), making items for sick or elderly, e.g. quilts (47), 12-step programs, e.g. Alcoholics Anonymous, Al-anon (13), divorced/separated, singles (13), children (4)

Spirituality

Prayer/retreat days (28), special Masses (30), prayer groups (15), prayer ministry (16)

Advocacy/Peace/Justice

Public Policy Education Network (PPEN) (21), write advocacy letters (43), attend public/legislative meetings (31), place announcements in parish bulletins (71), participate in NYS Catholic Conference Day in Albany (5), peace/justice/social concerns groups (8)

Reaching Beyond the Outreach

Formal twinning arrangement with another outreach on Long Island (23), informally assisting other outreaches (28), support a parish or mission not on Long Island (24), interfaith efforts for understanding and justice (67), blood drives/health screenings (45), community organizing (50), disaster response (15)



Survey Responses from Suffolk

St. Martin of Tours, Amityville
 St. Joseph, Babylon
 St. Patrick, Bay Shore
 Our Lady of the Snow, Blue Point
 St. John Nepomucene, Bohemia
 St. Luke, Brentwood
 Queen of the Most Holy Rosary, Bridgehampton
 St. John the Evangelist, Center Moriches
 Our Lady Queen of Martyrs, Centerport
 St. John of God, Central Islip
 Christ the King, Commack
 Our Lady of the Assumption, Copiague
 St. Frances Cabrini, Coram
 Ss. Cyril & Methodius, Deer Park
 St. Matthew, Dix Hills
 St. Mary, East Islip
 St. Anthony of Padua, East Northport
 St. Joseph the Worker, East Patchogue
 North Fork Parish Outreach*, Greenport
 St. Thomas More, Hauppauge
 Good Shepherd, Holbrook
 St. Hugh of Lincoln, Huntington Station
 St. Peter the Apostle, Islip Terrace
 Ss. Peter and Paul, Manorville
 St. Sylvester, Medford
 St. Elizabeth of Hungary, Melville
 Holy Cross, Nesconset
 St. Philip Neri, Northport
 Our Lady of Mt. Carmel, Patchogue
 St. Frances de Sales, Patchogue
 Infant Jesus, Port Jefferson
 St. Isidore, Riverhead
 St. John the Evangelist, Riverhead
 St. Anthony of Padua, Rocky Point
 St. Elizabeth Ann Seton, Ronkonkoma
 Ss. Philip & James, St. James
 St. Lawrence the Martyr, Sayville
 St. Margaret of Scotland, Selden
 St. James, Setauket
 Our Lady of the Isle, Shelter Island Heights
 St. Mark, Shoreham
 St. Patrick, Smithtown
 St. Louis de Montfort, Sound Beach
 St. John the Baptist, Wading River
 Our Lady of Grace, West Babylon
 Our Lady of Lourdes, West Islip
 Our Lady of the Miraculous Medal, Wyandanch



Resilient Communities

This past year, parishes have been stretched in many ways while providing the many services needed by our neighbors. This experience has once again proven that **our PSM/Outreach programs are resilient** and that coordinators, in collaboration with volunteers and supporters, are ever open to being the hands and feet of Christ.

* North Fork Parish Outreach serves four parishes: Our Lady of Ostrabama, Cutchogue; Sacred Heart, Cutchogue; St. Agnes, Greenport; St. Patrick, Southold